

PORT OF ILLAHEE - WATERFRONT IMPROVEMENTS

PROJECT DESCRIPTION

WHAT'S HAPPENING?

After many years of planning & public outreach the Port of Illahee is constructing the long-awaited improvements to the Illahee Dock and upland public access. This approx. \$2M public access project has been funded by three separate State water access grants, Port funds, and private donations.

UPLAND IMPROVEMENTS

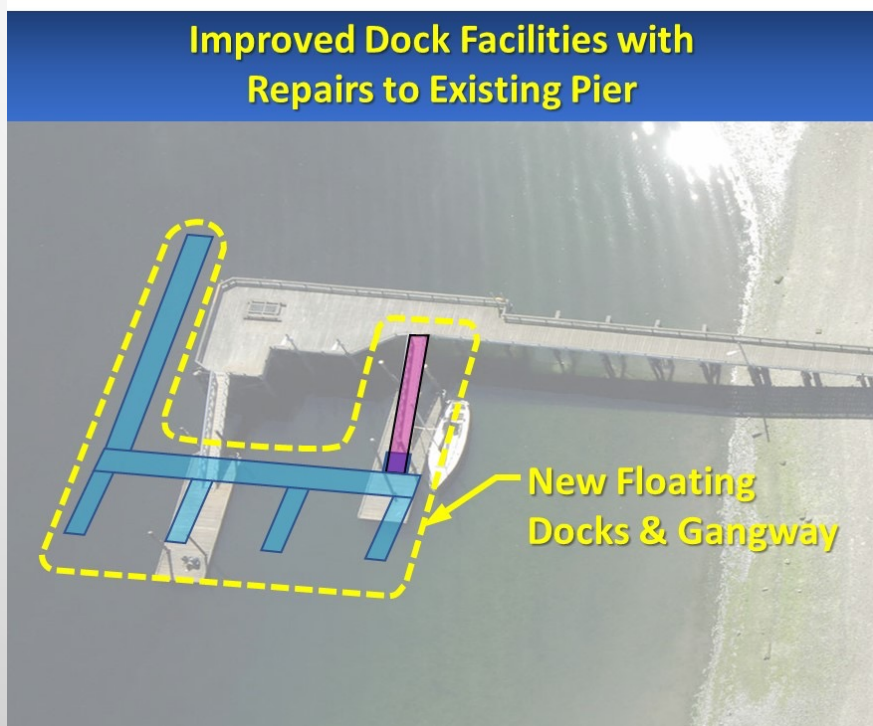
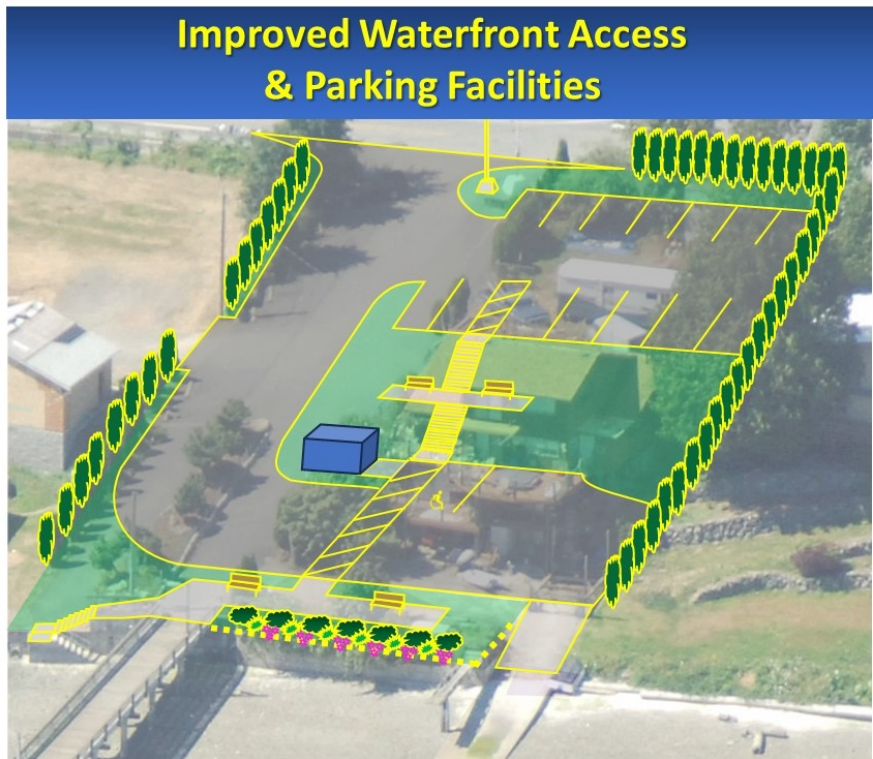
The existing port owned upland property and entrance roadway will be completely renovated to provide significantly improved parking, waterfront access, restroom, and landscaped public areas.

PIER REPAIRS

The historic Illahee Pier requires significant repairs for safety and durability including replacement of approximately 20 support pilings.

NEW FLOATS & MOORAGE

The existing floats at the end of the Illahee Pier have reached the end of their useful life and will be replaced with a significantly improved new float and gangway system providing both motorized boat moorage and recreational floats for non-motorized craft and fishing.



MAY 2025

PORT OF ILLAHEE - WATERFRONT IMPROVEMENTS

CONSTRUCTION UPDATE

PUBLIC NOTICE:

All public access to the Illahee Dock and moorage floats is currently closed until project completion.

ANTICIPATED CONSTRUCTION MILESTONES	STATUS UPDATE
AWARD A CONSTRUCTION CONTRACT TO QUIGG BROS. INC	✓ COMPLETE JANUARY 2025
CLOSE ALL PUBLIC ACCESS & CONSTRUCTION MOBILIZATION	✓ COMPLETE APRIL 2025
DEMOLITION OF BUILDINGS & UPLAND CLEARING	CURRENTLY IN PROCESS
UPLAND UNDERGROUND UTILITY IMPROVEMENTS	ANTICIPATED MAY – JUNE 2025
UPLAND GRADING & RETAINING WALLS	ANTICIPATED JUNE – JULY 2025
UPLAND SIDEWALKS & CONCRETE	ANTICIPATED JUNE - AUGUST 2025
DEMOLITION OF EXISTING FLOATS & GANGWAYS	ANTICIPATED AUGUST 2025
PIER REPAIRS AND PILING REPLACEMENT	ANTICIPATED AUG. – SEPT. 2025
INSTALLATION OF NEW FLOATS AND GANGWAYS	ANTICIPATED AUG. – SEPT. 2025
INSTALLATION OF NEW VAULT RESTROOM	ANTICIPATED AUG. – SEPT. 2025
ASPHALT PAVING, PARKING, & STAGING AREAS	ANTICIPATED FALL 2025
UPLAND LANDSCAPING & MISC. FINAL IMPROVEMENTS.	ANTICIPATED FALL 2025
PROJECT COMPLETION & OPENING TO PUBLIC USE	ANTICIPATED OCT. – NOV. 2025

MAY 2025

PORT OF ILLAHEE - WATERFRONT IMPROVEMENTS

RECENT PHOTOS

